

WIELTRA

USER MANUAL

2024

EVO SERIES

Usage

Product Images

Wiring Diagrams



www.wieltra.com

Assembly

- The installation must be done by an electrician.
- Before assembling the receiver unit, cut off the electrical power of the crane.
- No batteries should be installed in the transmitter unit before assembly.
- If the receiver unit is to be mounted on a crane located outdoors, it must be mounted in a protected manner so as not to be directly affected by different weather conditions.
- The receiver unit must be mounted in a solid place to be resistant to movements. It should not be mounted in a closed metal panel.
- Pay attention to the connection diagram during the installation process.

Instructions for Use

- Apply electrical energy to the crane from the main switch.
- Check whether electrical energy is coming to the receiver unit.
- Put the transmitter into emergency stop mode by pressing the emergency stop button.
- Insert 2 batteries into the transmitter.
- Turn the emergency stop button and press the start button, with these operations the system is ready for use.
- You can control your crane with movement buttons.
- After using the crane, leave the transmitter in emergency stop mode by pressing the emergency stop button of the unit and cut off the electricity of the crane from the main switch.
- If the red LED is on while the transmitter is in start-up state, it means the battery is low. Please be careful to use quality batteries.

Security

- During installation and maintenance, cut off the crane's power from the main switch.
- When the crane is not in use, cut off the power of the crane from the main switch.
- The cables of the receiver unit should be kept in a way that they will not be damaged, and care should be taken if there are exposed cables.
- Do not touch areas where electric current is present on the receiver unit.
- The product should be stored in dry and clean conditions.
- Contacts and antennas must be kept clean.

Warranty

- Our products are covered by warranty against manufacturing defects.
- Warranty period; It is 2 years from the date of invoice issued by the seller.
- If the buyer company repairs the malfunction or makes any intervention without the permission of the seller, the product will not be considered under warranty.
- During the warranty period, technical checks and maintenance of defective products are carried out by our authorized technical service.
- In cases caused by the user mentioned below, the product is not considered under warranty.
- The seller is not obliged to cover any other damages arising directly or indirectly from the products and cannot be held responsible in any way.

Situations Outside the Scope of Warranty

- User errors
- Malfunctions caused by normal wear and tear
- End-of-life electronic parts
- Products subject to unauthorized modifications
- Malfunctions caused by incorrect installation and use
- Humidity and water damage
- Malfunctions caused by physical impacts

Maintenance

- Repair and maintenance must be done by professionals.
- Only original materials should be used.
- The product should be stored in dry and clean conditions.
- Contacts and antennas must be kept clean.

Box Content

- 1 receiver
- 1 transmitter
- 1 meter mounting cable
- 1 hanger
- 1 protective case User Manual
- Wiring diagram

- Custom Software Development According to Needs
- Ergonomic Design and Robust Body Structure
- Safe Emergency Stop and Start Button
- Long Life Keypad
- Safe Frequency Control
- Fast and Experienced Technical Service
- 2 Year System Warranty and 10 Year Spare Parts Supply Warranty

Certificates



Transmitter Off

If the emergency stop button is pressed, the transmitter turns off. All relays become passive.



Start

Transmitter hand pilot when the start button is pressed becomes active. The hand pilot starts sending data. is ready.



LED

LED1 is green when the transmitter is active.

When the transmitter is in emergency stop state, LED1 is green and LED2 is red.

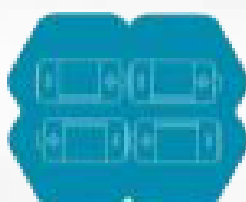
When the battery is low, LED1 is red.



Battery Replacement

There is a battery cover on the back of the transmitter unit. If the battery is low, LED1 is red. The transmitter unit works with 2 or 4 batteries.

Battery type : (LR6(AA)1.5V / N MH(AA)1.2V) x2 2XAA/4XAA



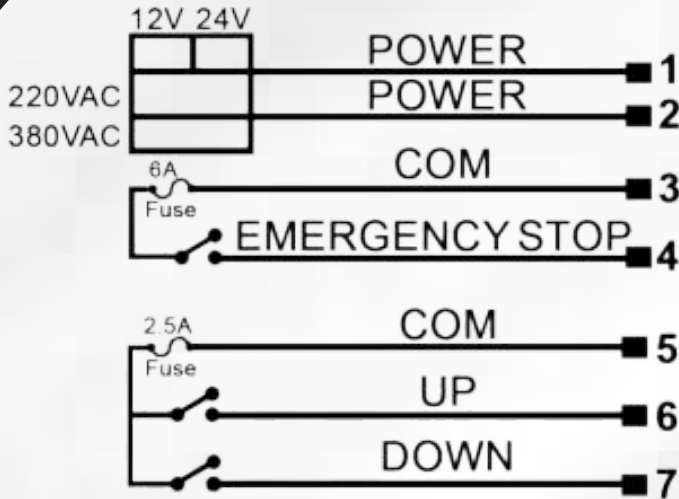
EVO Series transmitters have 2-4-6-8-10-12 buttons. Action buttons are produced in single speed and double speed structures. In 2-stage buttons; 1st stage is slow, 2nd stage is fast.



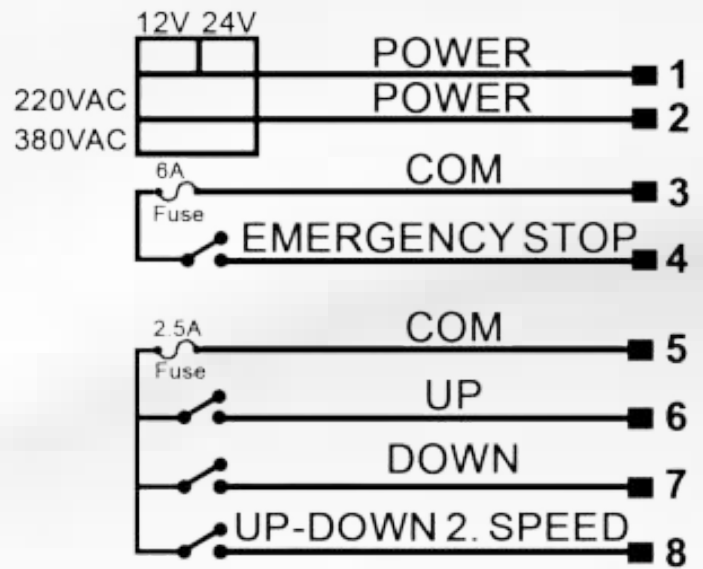
- 1. Emergency Stop Button
- 2. LED1
- 3. LED2
- 4. Action Buttons
- 5. Start Button

- While the transmitter's stop button (1) is pressed, the receiver's pairing button (1) is held down.
- While the int, power, stop and data LEDs on the receiver (2) light up respectively, the hook buttons (6 and 7) on the transmitter are kept pressed.
- When the transmitter LEDs (2 and 3) are lit solidly, the receiver and transmitter are paired.
- When the transmitter is in emergency mode, the power LED lights up once a second, the int LED flashes continuously, and the stop LED lights up steadily.
- When the transmitter exits the emergency position, the stop LED goes off. The power LED turns on every second, the int LED flashes continuously, and the data LED turns on momentarily when each button of the transmitter is pressed and goes out when the button is released.

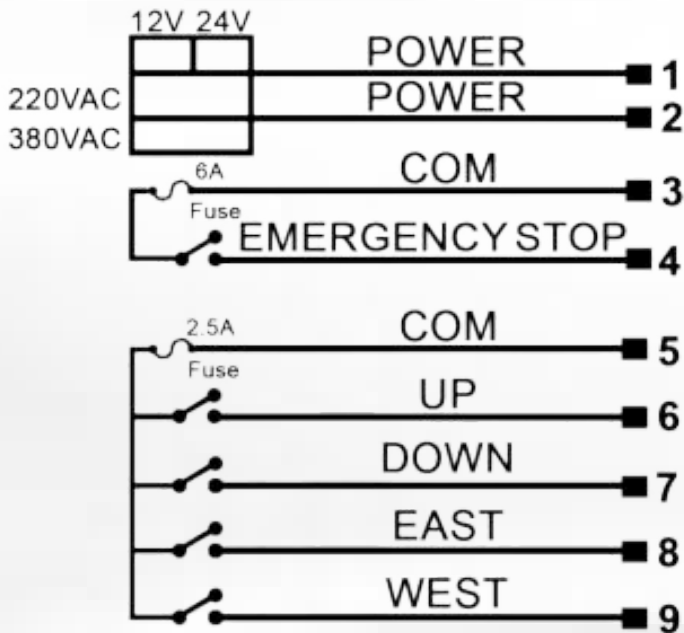
EVO 202



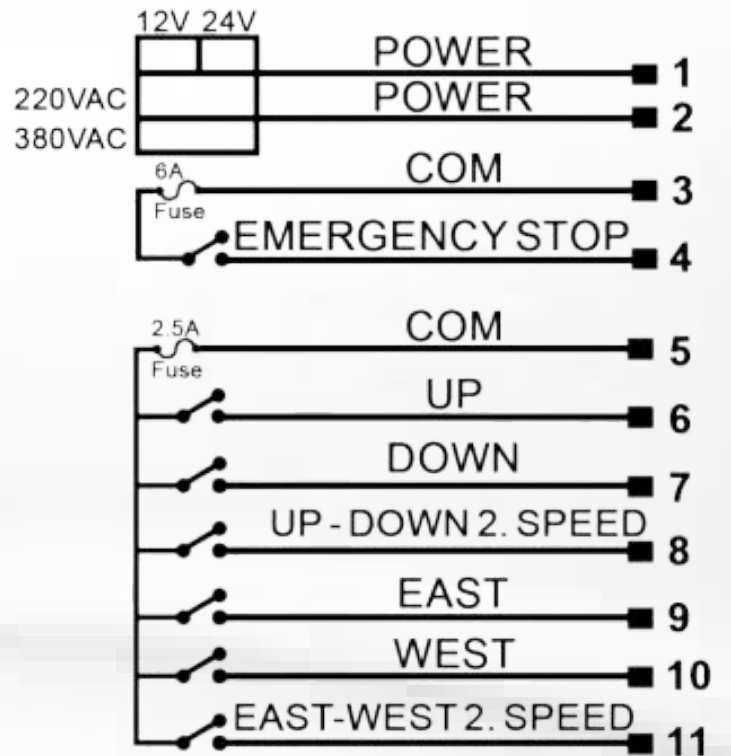
EVO 204



EVO 404

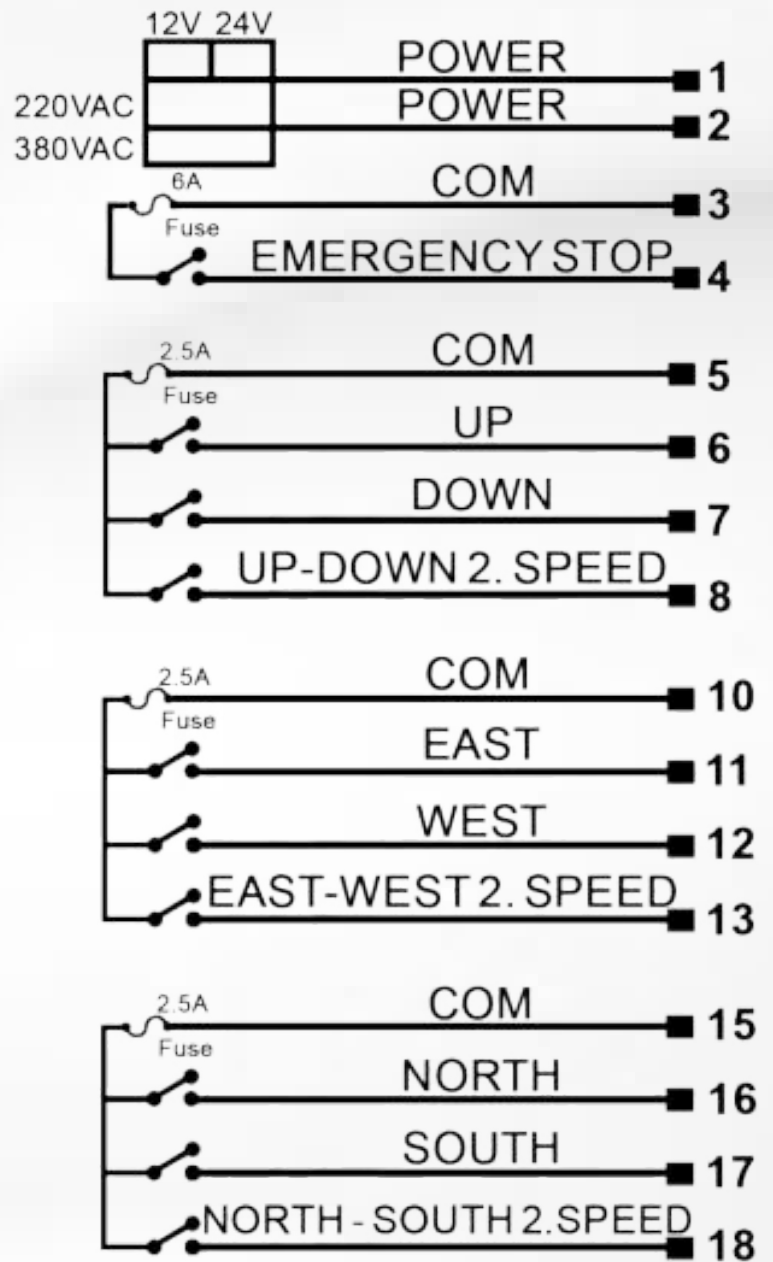
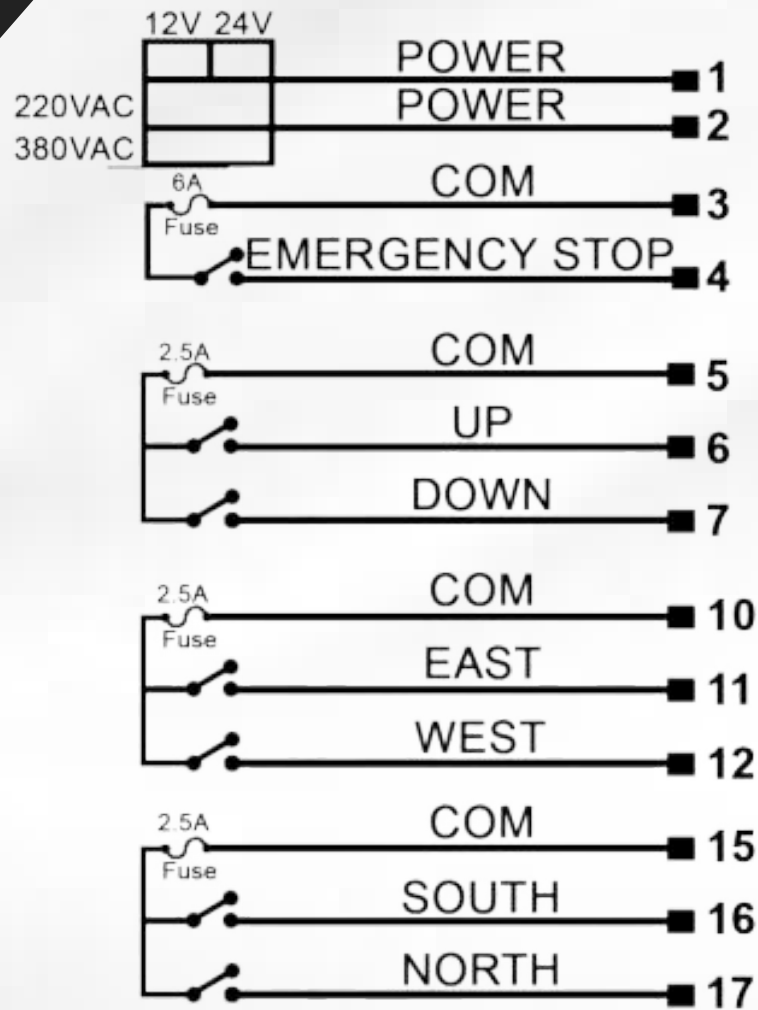


EVO 408



EVO 606

EVO 612





WARRANTY CERTIFICATE

WIELTRA CRANE REMOTE CONTROLS ARE COVERED BY OUR WARRANTY AGAINST MATERIAL AND MANUFACTURING DEFECTS FOR 2 (TWO) YEARS FROM THE DATE OF DELIVERY.

PRODUCT USAGE SPECIFIED IN OUR PRODUCT CATALOG AND ON OUR WEBSITE APART FROM THEIR FIELDS AND APPLICATION CONDITIONS; TRANSPORTATION, STORAGE, ASSEMBLY, PRODUCTS THAT MALFUNCTION DUE TO THE USER, SUCH AS WORKMANSHIP ERRORS, IS OUT OF WARRANTY.

Product Type:

Warranty Period:

Product Model:

Maximum Delivery Time:

Series:

Barcode:

Seller Company

Buyer Company



**ADRES: Fevziçakmak Mahallesi Medcezir Caddesi
No:39 Karatay/KONYA/TÜRKİYE**



0332 236 76 96



www.wieltra.com